



**Smart** MEETINGS & EVENTS  
AT ATLANTIC HOTEL HEIDELBERG



ATLANTIC Hotel Heidelberg Europaplatz Betriebsges. mbH  
Europaplatz 1 · 69115 Heidelberg · Germany

Events team: Tel. +49 6221 4277-565  
veranstaltung.ahh@atlantic-hotels.de

## WELCOME TO THE ATLANTIC HOTEL HEIDELBERG

It is our pleasure to introduce our event rooms and possibilities in this brochure.

There are seven event rooms and one ballroom with state-of-the-art technology available to hire in our hotel. From business meetings to gala evenings, we can organise a wide variety of events, each tailored to your specific requirements.

All of our event rooms are equipped with a projector and screen, are air-conditioned and offer natural daylight. The highlight of our hotel is the 350 m<sup>2</sup> "Ballsaal" (ballroom). The floor-to-ceiling windows offer you an impressive view of Heidelberg Castle and from the newly developed Bahnstadt district all the way to the Palatinate Forest during your event.

In addition to our conference rooms, our hotel also boasts three banquet foyers, which are available for your coffee breaks, lunches or as exhibition spaces.

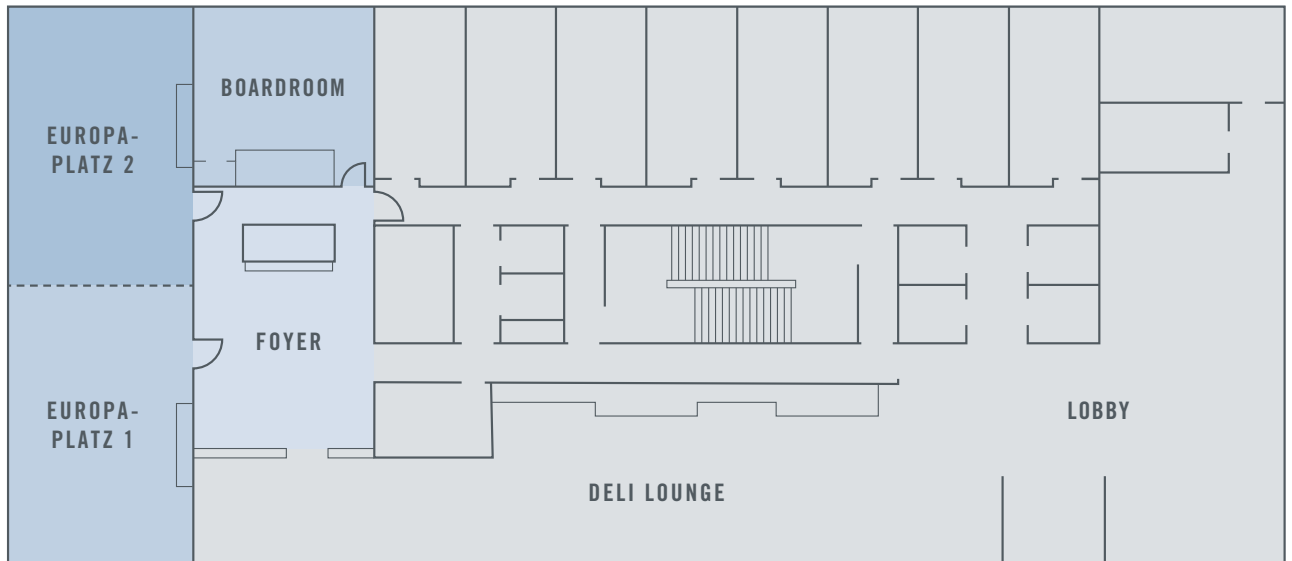
Our event sales coordinators are experts and always on hand to assist you with any questions or special requests. Please feel free to contact us via e-mail or telephone:

Event sales team

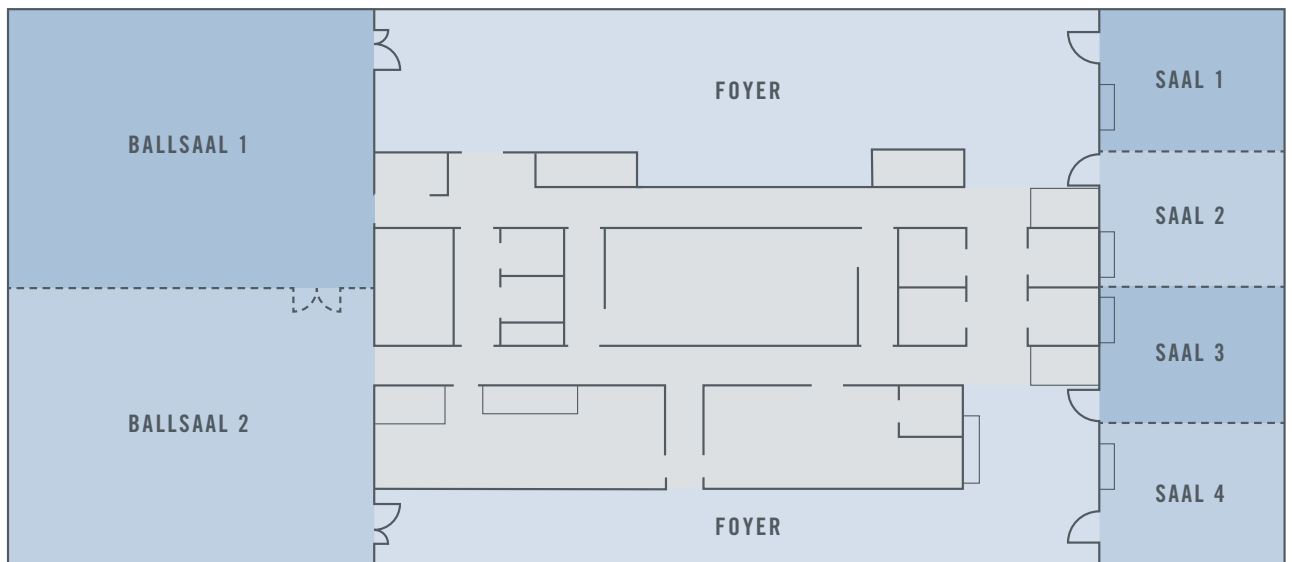
Tel. +49 6221 4277-565

[veranstaltung.ahh@atlantic-hotels.de](mailto:veranstaltung.ahh@atlantic-hotels.de)

## FUNCTION ROOMS



GROUND FLOOR



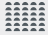




11th FLOOR

Europaplatz foyer = 78 m<sup>2</sup>

Ballsaal 1 foyer = 205 m<sup>2</sup>

Ballsaal 2 foyer = 115 m<sup>2</sup>

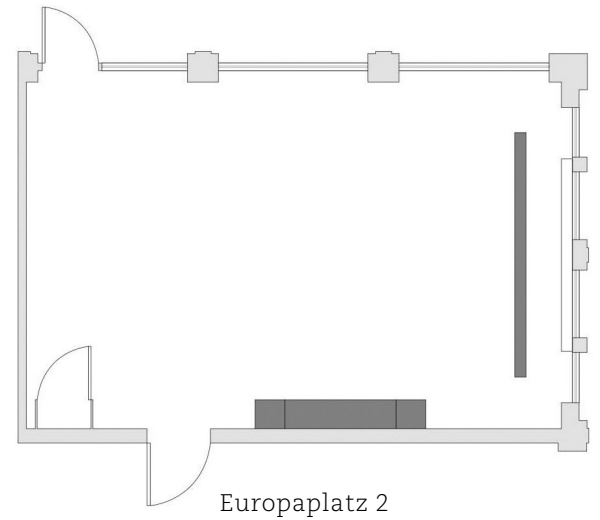
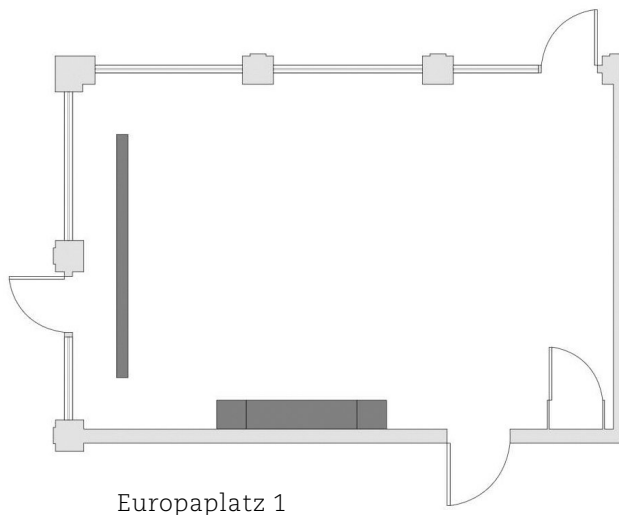
## Capacities

	m <sup>2</sup>	Maximum number of persons					Dimensions in m	
							Width	Length
<b>Ground floor</b>								
Europaplatz 1+2	160	140	90	40	100	150	7.64	23.05
- Europaplatz 1/2, each	80	60	45	26	40	75	7.64	11.52
Boardroom	48	-	-	-	14	-	7.64	6.08
<b>11<sup>th</sup> floor:</b>								
Ballsaal 1+2	350	280	200	-	190	320	15.28	23.05
- Ballsaal 1 / 2, each	175	145	110	45	110	160	15.28	11.52
Saal 1+2+3+4	160	140	90	40	100	150	7.64	23.05
Saal 1+2+3	120	90	75	34	80	115	7.64	17.25
Saal 1+2 / 3+4, each	80	60	45	26	40	75	7.64	11.52
- Saal 1 / 2 / 3 / 4, each	40	27	12	10	-	-	7.64	5.79

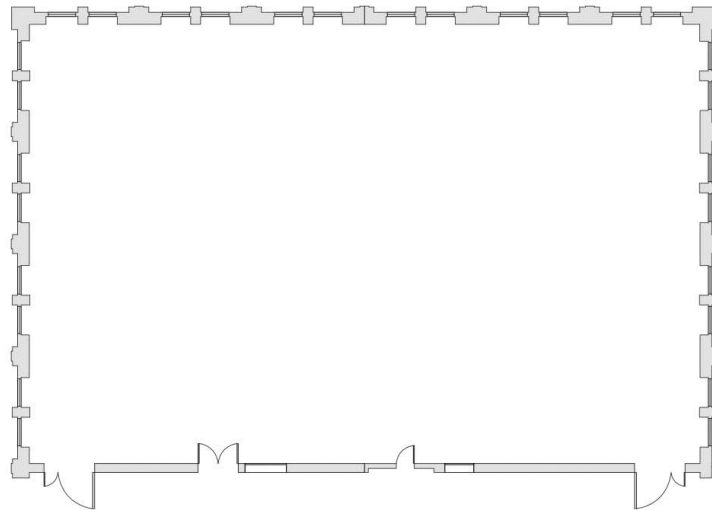
## Room costs

	m <sup>2</sup>	Whole day in €	Half day in €	Set-up costs in €
<b>Ground floor</b>				
Europaplatz 1+2	160	1,600.00	1,600.00	700.00
- Europaplatz 1/2, each	80	850.00	600.00	450.00
Boardroom	48	550.00	350.00	550.00
<b>11<sup>th</sup> floor:</b>				
Ballsaal 1+2	350	5,000.00	5,000.00	2,000.00
- Ballsaal 1 / 2, each	175	1,750.00	1,200.00	800.00
Saal 1+2+3+4	160	1,900.00	1,900.00	750.00
Saal 1+2+3	120	1,500.00	1,500.00	600.00
Saal 1+2 / 3+4, each	80	1,000.00	850.00	550.00
- Saal 1 / 2 / 3 / 4, each	40	600.00	450.00	300.00

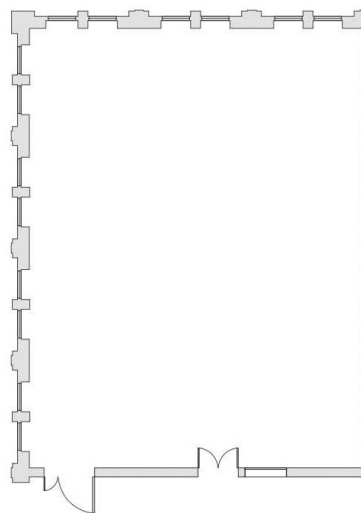
## Visualizations Europaplatz



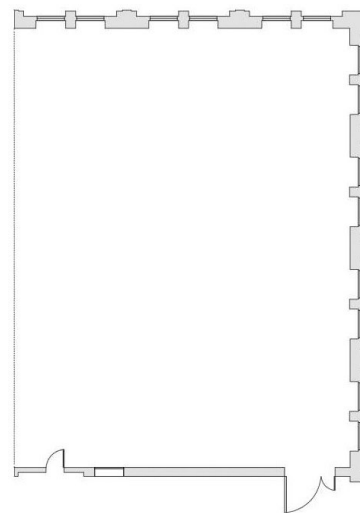
Daylight	✓
Air conditioning	✓
To be darkened	✓
Accessible by car	-
Internet connection	✓
Electricity	220 V, 16 A / 400 V, 16 A
Projector / screen	✓
TV connection	Internet TV
Sound system	✓
Floor covering	Carpet
Location in hotel	Ground floor
Special features	Doors can be opened onto Europaplatz, floor-to-ceiling windows

**Ballsaal**

Ballsaal



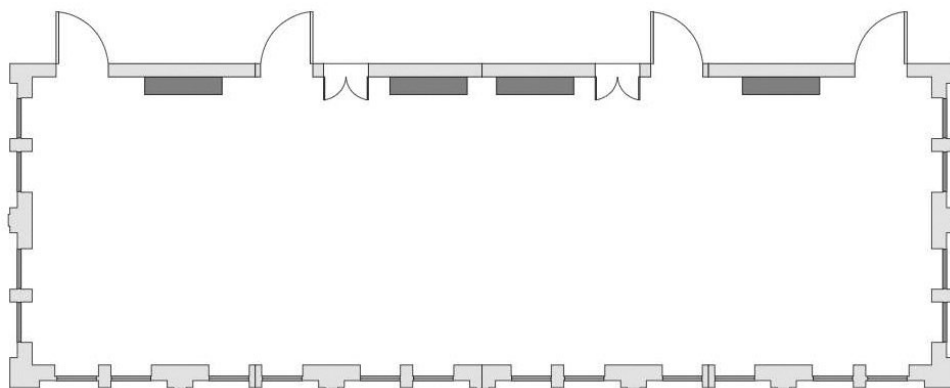
Ballsaal 1



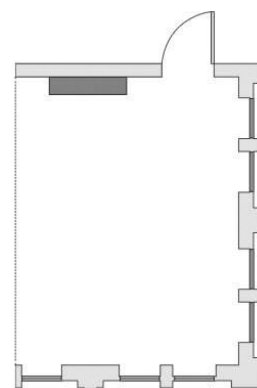
Ballsaal 2

Daylight	✓
Air conditioning	✓
To be darkened	✓
Accessible by car	-
Internet connection	✓
Electricity	220 V, 16 A / 400 V, 16 A
Projector /screen	✓
TV connection	Internet TV
Sound system	✓
Floor covering	Parquet
Location in hotel	11 <sup>th</sup> floor, with lift
Special features	360° view of Heidelberg, floor-to-ceiling windows

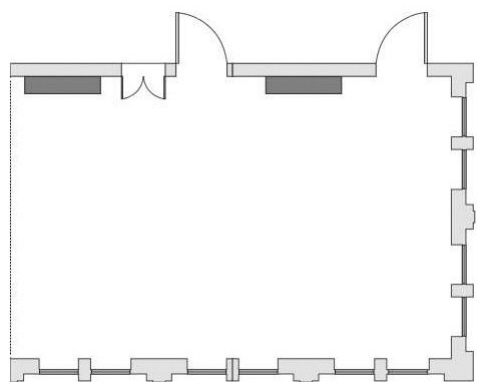
## Saal 1-4



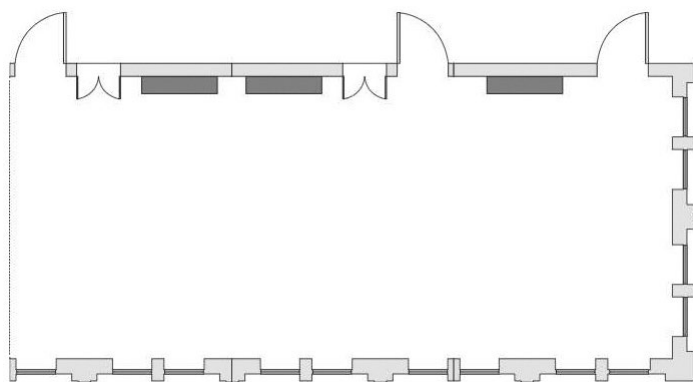
Saal 1+2+3+4



Saal 1



Saal 1+2



Saal 1+2+3

Daylight	✓
Air conditioning	✓
To be darkened	✓
Accessible by car	-
Internet connection	✓
Electricity	220 V, 16 A / 400 V, 16 A
Projector /screen	✓
TV connection	Internet TV
Sound system	✓
Floor covering	Parquet
Location in hotel	11 <sup>th</sup> floor, with lift
Special features	360° view of Heidelberg, floor-to-ceiling windows

## CONFERENCE PACKAGES

Please note that the conference packages do not include the **Room set-up costs** (incl. energy flat rate) for our conference and event rooms (see “**Room costs**”).

### ATLANTIC half-day package with lunch

- Standard equipment: 1 projector, 1 screen, 1 flip chart, 1 bulletin board, 1 presenter kit, paper and pens in the room
- Unlimited large bottles of mineral water and apple juice in the event room
- A mid-morning coffee break with:  
Filter coffee, speciality coffees, a selection of ALTHAUS teas and a snack
- **Lunch as a seasonal buffet or a 3-course menu** as recommended by our head chef (depending on attendance) incl. mineral water (still & sparkling)

€82.00 per person/day

### ATLANTIC half-day package with snack

- Standard equipment: 1 projector, 1 screen, 1 flip chart, 1 pin board, 1 presenter kit, paper and pens in the room
- Unlimited large bottles of mineral water and apple juice in the event room
- A mid-morning coffee break with:  
Filter coffee, speciality coffees, a selection of ALTHAUS teas and a snack
- A seasonal **lunch snack** as recommended by our head chef (depending on attendance) incl. mineral water (still & sparkling)

€72.00 per person/day

### ATLANTIC full-day package

- Standard equipment: 1 projector, 1 screen, 1 flip chart, 1 pin board, 1 presenter kit, paper and pens in the room
- Unlimited large bottles of mineral water and apple juice in the event room
- A mid-morning coffee break with:  
Filter coffee, speciality coffees, a selection of ALTHAUS teas and a snack
- **Lunch as a seasonal buffet or a 3-course menu** as recommended by our head chef (depending on attendance) incl. mineral water (still & sparkling)
- An afternoon coffee break with:  
Filter coffee, speciality coffees, a selection of ALTHAUS teas and a snack

€98.00 per person/day



**Additional extras:**

**Welcome coffee** € 6.50 per person

- Filter coffee, speciality coffees,  
selection of ALTHAUS teas

**Baked goods**

- Croissant € 2.80 each
- Pain au Chocolat € 2.80 each
- Fruit pastry € 2.80 each
- Seasonal sheet cake € 3.50 per piece
- Pretzel with/without butter € 3.50 each

Please feel free to visit our website for further information on our catering offering:  
<https://www.atlantic-hotels.de/en/hotel-heidelberg/meetings-events/>

Upon request, we will also be happy to provide you with information on our drinks selection and beverage packages. We will gladly prepare a customised offer according to your wishes.

## CONFERENCE TECHNOLOGY

Our function rooms are equipped with state-of-the-art conference and audiovisual technology. Your conference package already includes 1 projector, 1 screen, 1 flip chart, 1 bulletin board and 1 presenter kit as well as paper and pens for all guests. You and your guests naturally have access to free high-speed wireless Internet throughout the hotel – meaning hybrid meetings are also no problem here.

The overview below shows a selection of the extra event equipment that can be booked. This can also be complemented with equipment hired from other sources.

Flip chart (in addition to conference package)	€ 25.00 per item / day
Bulletin board (in addition to conference package)	€ 25.00 per item / day
Projector and screen	€ 120.00 per pair / day
Whiteboard, digital	€ 200.00 per day
Stage	upon request
Microphone system incl. 1 microphone	€ 450.00 per day
Microphone	€ 100.00 per item / day
Lectern	€ 75.00 per item / day
Adapter (deposit)	€ 50.00
Laser pointer	€ 15.00 per item / day

## ARRIVAL AND PARKING

The ATLANTIC Hotel Heidelberg is located right next to Heidelberg Central Station and is easy to reach with public transport. If you are coming by car, you are welcome to use the hotel's private parking spaces. In addition, there are more than 700 public parking spaces in two multistorey car parks in the immediate vicinity of the hotel.

### Arrival via the A5 / A656

Take the exit in the direction of A656 / Heidelberg at motorway junction 37 (Kreuz Heidelberg). Follow the signs for Heidelberg /A656 for a further 2 km, then continue straight on Bergheimer Straße. After 200 m, turn right onto Czernyring and follow the road for 700 m. Turn left onto Max-Planck-Ring. After 300 m, the entrance to the underground car park is located on the right between Europaplatz and Heidelberg Central Station.

